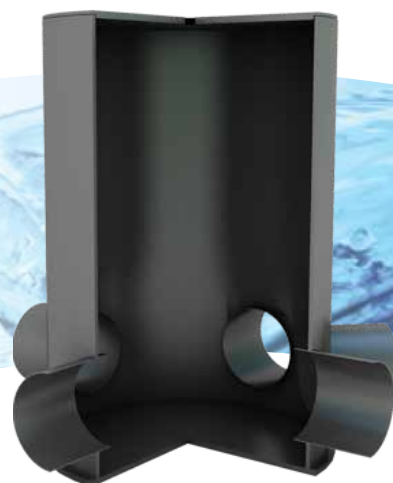


Catchpit Chamber 160

500mmØ Catchpit 5 x 160mmØ inlet, 1 x 160mmØ outlet

Product Code: SELH04001



Design

Skeletank catchpit chambers are designed to complement Skeletank attenuation and infiltration systems.

The SELH04001 has a diameter of 500mm and an overall nominal height of 750mm. The polyethylene chamber can be easily reduced on site to suit required invert levels.

Specification

Each chamber has 5 number 160mm diameter inlet pipe spigots and 1 number 160mm diameter outlet pipe spigot to suit standard PVC-u push fit drainage pipework. The inlet/outlets can be reduced to 110mm diameter by incorporating level invert reducers as required.

The SELH04001 chamber has a 50mm deep sump to accommodate the deposition of silt and debris in the collected rainwater for later removal under a regular maintenance regime.

Installation

1. Set out the location of the chamber
2. Excavate to the required depth. Set the chambers on a bed of concrete in accordance with the standard detail drawing. The chambers are supplied with a secondary cover; this cover must be left in place during construction to prevent any debris i.e. Stone, mortar, bricks etc falling into the chamber.

It is recommended that this cover be left in place when the brickwork and final choice of cover & frame has been fixed. Before completion ensure that the secondary cover is not trapped by mortar and can easily be removed.

Element	Dimensions
Chamber diameter	500mm
Sump depth	50mm
Overall depth	750mm
Number of spigots	6
Spigot diameter	5 x 160mm, 1 x 160mm
Material	Polyethylene

3. If it is necessary to reduce the height of the chamber, remove the secondary cover, cut the chamber to the required height and replace the secondary cover before installation.
4. Connect the pipe work using standard underground pipes and fittings.
5. Backfill in accordance with the standard detail drawing or specific Contract requirements.
6. To complete the installation, a manhole cover to suit loading requirements should be procured and positioned using brickwork to adjust levels.